

Data Entry Guidebook

*for Cataloging
Costume and Jewelry Inventory*

Table of Contents

Introduction

- 1) Examples of Garment types
- 2) Garment Details descriptions
- 3) Shoes
- 4) Hats
- 5) Parts of a Garment,
Differences between Men's and Women's
Garments
- 6) How to measure a Garment for size.
Size Charts for Garments and Hats
- 7) Fabric/Color Patterns
- 8) Fabric Samples
- 9) Eras / Time Periods
- 10) Jewelry Descriptions and Ring Size chart

Appendix

- a) Notes on printing and setting up a binder
- b) Credits

Introduction

Guidebook for Entering Data in your Costume and Jewelry Inventory Database

This Guidebook is designed to help you enter descriptive data for your garments and jewelry. Each section has information to help you fill in the fields in the Costume Pieces and Jewelry screens completely and accurately.

The *Theatre and Jewelry Inventory Databases* (from Costume Inventory Resources) are designed to help you catalog your collection, find select pieces, checkout/rent items and build Production lists.

The database is built on the idea that you will create a single record for each garment or piece of jewelry. That record needs as much information as you can enter and needs to be accurate. Adding photos is important but you cannot search the database based on the photos.

When you are entering data in the Costume Piece or Jewelry record you should think about how you want to find that record later. For Costumes - many times you want to start your search by looking for :

Costume Type
Color / Color Pattern / Fabric Type
Time Period / Era
Size and Measurements
The Production it was used in?

If your records have the Costume Type, Color, Time Period/Era, etc. fields filled in - then you can search for them. If those fields are blank - the records won't show up in the Search Results.

Enter your record but plan to visit each record a second time! Often when you are entering records after they have been tagged and photographed you may be in a hurry to keep adding records to get at least something entered for each item. But once you start using the database as a tool to search for records and check them out - you may find you need more information on each item. It is a good idea to set aside more

time to revisit your costume and jewelry records to see what fields are missing data and take the time to enter the data.

Here is a screen print of the Search Screen. The fields that are highlighted are very important for searching. The other fields are important too but each record should have these fields filled in at least - so those fields are searchable.

Search for Individual Costume Pieces

Clear All View Search Results Close

Select one or more criteria to search for a costume piece

Search **Both Costume Name and Description** for:

Costume Name *:

Description *:

Costume Type:

Group / Category:

Color:

Colour Pattern:

Fabric:

Time Period:

Design Style:

Hem Length:

Sleeve:

Special Effect:

Condition:

Adult / Child:

Gender:

Size:

Chest Measurement: Waist: Hips: Inseam: ** Enter #s only

Designer:

Source *:

Storage Location:

Storage Location Details:

Current Location:

Notes:

Date Costume Record Added/Updated: Between: and

Date Costume Checked Out: Between: and

Needs Repair: ☐ Needs Alterations: ☐

Multiples: ☐ Disposable: ☐

Costume Records WithOut Photos: ☐ Costumes with this photo file name:

** Note: If you click both Needs Repair and Needs Alteration - Only records that need BOTH repairs and alterations will be displayed

When you view the results - one of the most important pieces of information is the Storage Location. You have found the costume records on the computer and now you need to find it for real. If the Storage Location is not listed - it will take you a lot of extra time to find the items in your warehouse or storage room.

Here is a Search Results screen for Costume Type = "Dress".

Search Results

Costumes Found: 22

Search for: Costume type = Dress

Photo Gallery/Catalog Print Results Print Results with Photos Print Results Summary Costumes Available Now by Type and Size More Results Reports

Tag ID	Costume Name	Costume Type	M/F	Adult/Child	Size	Ct	W	H	I	Color	Time Period	Storage Location	Current Location	Check Date
00114	Black 1950's dress	Dress	F	A	4					Black	Contemporary	Main Storage - Rack 3	Checked-In	
3001	Blue Dress	Dress	F	A	M					Blue	Contemporary	Main Storage - Rack 3	Checked-Out	
08401	Blue Lycra dress	Dress	F	A						Blue	Contemporary	Main Storage - Rack 3	Storage	
97004	Blue satin dress	Dress								Blue		-	Storage	
1020	Blue shirtwaist dress	Dress	F	A	L					Blue	Contemporary	Main Storage - Rack 3	Checked-Out	
08403	Blue/white sun dress	Dress	F	A	XS					Blue	Contemporary	Main Storage - Rack 3	Storage	
60002	Cherries Dress	Dress	F	A	XS	32	28			Black	1950's	Main Storage - Rack 3	Checked-In	
60010	Flapper Dress	Dress	F	A	L					Red	1920's	Main Storage - Rack 3	Storage	
08402	Floral mini sun dress	Dress	F	A	XS					Pink	Contemporary	Main Storage - Rack 3	Checked-Out	
1502	Green Dress	Dress		A	XS					Green	Contemporary	Alcove - Box 11	Checked-Out	
10002	Green plaid dress	Dress	F	C	M					Green	Edwardian Era	Main Storage - Rack 1 - Top	Checked-Out	
1016	Red dress full skirt	Dress	F	A	L					Red	1950's	Main Storage - Rack 3	Checked-Out	
1014	Red flapper dress	Dress		A	S					Red	1920's	Main Storage - Box 10	Checked-In	
26521	Red Flapper Dress	Dress		A	XXL					Red	1930's	Main Storage - Rack 1 - Top	Checked-In	
1009	Red Polka dot Dress	Dress	F	A	M					Red	1950's	Main Storage - Rack 3	Checked-Out	
1504	Red satin dress	Dress		C	S					Red	Contemporary	Alcove - Rack 5	Checked-In	
12056	Russian dress	Dress	F	A	10					Blue		-	Storage	
0401	Snow White Dress	Dress	F	A	8					Blue	Renaissance / Medieval / I	Main Storage - Rack 4	Checked-Out	
98130	Snow White Dress	Dress	F	A	8					Blue	Renaissance / Medieval / I	Main Storage - Rack 4	Checked-Out	
98999	Snow White Dress	Dress	F	A	8					Blue	Renaissance / Medieval / I	Main Storage - Rack 4	Checked-Out	
120400	Yellow 1950's dress	Dress	F	A	XS	32	28			Yellow	1950's	Main Storage - Rack 3	Storage	
5104	Zanetta's dress	Dress	F	A	6					Multicolor	1900	-	Checked-In	

You see the results of the search. You can also see that not all records have the Size, Time Period or Storage Location filled in. Imagine you wanted more information on **Tag ID 08401 - Blue Lycra Dress**. You have to go to the dress and find the size. But how do you know where it is? The Storage Location isn't filled in.

The screenshot shows the 'The Oaks Youth Theatre' Costume Pieces database. The record for Tag ID 08401, 'Blue Lycra dress', is displayed. Key fields include: Costume Name: Blue Lycra dress, Costume Type: Dress, Category: Theatre, Design Style: Casual, Color: (blank), Color Pattern: Solid, Fabric: Lycra, Hem Length: (blank), Sleeve: (blank), Special Effects: (blank), Time Period: Contemporary, Condition: Good, Adult / Child: (blank), Size: (blank), Gender: Female, Costume Designer: (blank), Source: Old Navy, Date Acquired: 2012, Total Cost To Make/Buy (ea): \$15.00, Replacement Cost: \$20.00, Rental Fee: \$12.50, Dry Cleaning Fee: \$0.00, Qty: 1, Multiple: (unchecked), Qty Avail: (blank), Disposable: (unchecked), Cleaning Code: 3-Gentle hand wash in cold water; user Woolite or similar mild detergent, rinse well and drip dry, Storage Location: (blank), Details: (blank), Location Notes: (blank), Notes: (blank). The interface includes a search bar, navigation buttons, and a photo of the dress. Red arrows point to the Color, Size, and Storage Location fields, highlighting missing information.

Looking at the record you see that many of the key fields are left blank. In searching for Costume Type = 'Dress' - you found it but if you had also searched for Color = 'Blue' you would not have seen this record in the Search Results. Even though you know the dress is blue, if the data isn't filled in, the database can't find it.

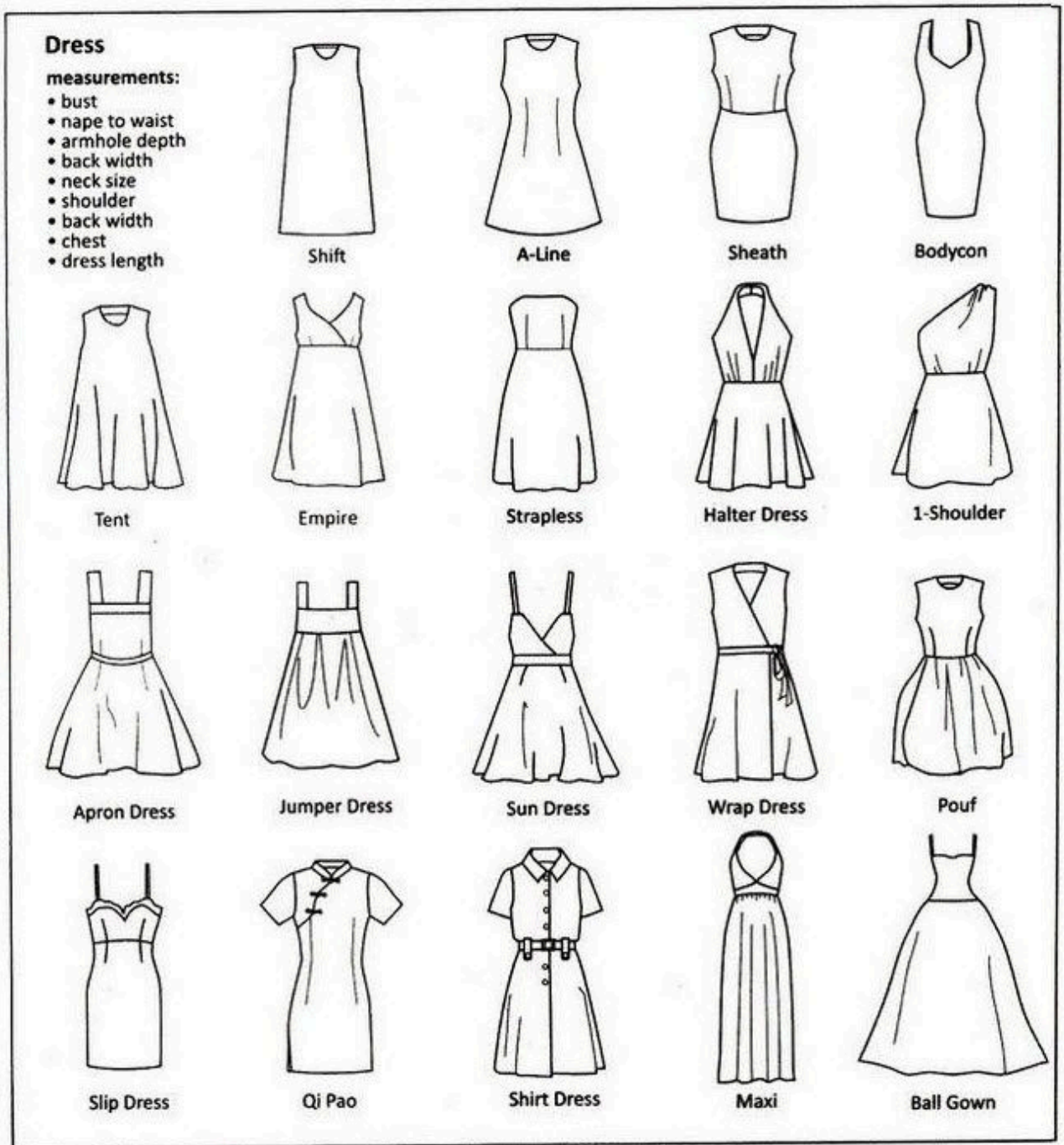
The Theatre Inventory Database is a great tool but it only works for you if you and your staff enter the data completely and accurately. We hope this guide will help you. We recommend that you print one copy of this Guide for each workstation so everyone has access to it.

This Guidebook is designed to go in 1" Binder with 10 Dividers. Print out the Title Page (pg 1) 2 times - once for the cover and once for a title page. Please see the Appendix on setting up the binder.

All text is copyrighted by Costume Inventory Resources, 2021. The images are from a variety of sources - see credits.

This book may be duplicated for school/theatre use. PDF copies are available at www.costumeinventory.com.

1) Garment types



Top

measurements:

- bust
- nape to waist
- armhole depth
- back width
- neck size
- shoulder
- sleeve length
- cuff size



Princess Vest



Blouse



Shirt



Western



Military



Pin Tuck



Tuxedo



Ruffle Front



Cossack



Smock



Peplum



Gypsy



Sailor



Tunic



Polo



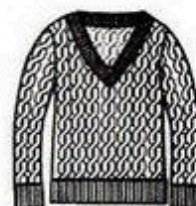
Henley



Turtleneck



Sweatshirt



Sweater/Jumper

Skirt

measurements:

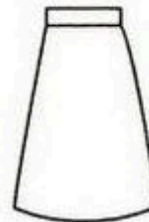
- waist
- hips
- waist to hips
- waistband height
- body rise
- waist to floor
- sweep



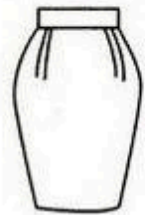
Straight



Pencil



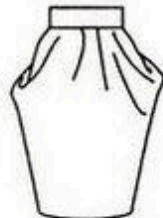
A Line



Pegged



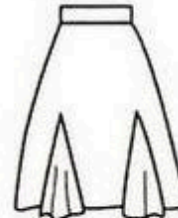
Slit



Cowl



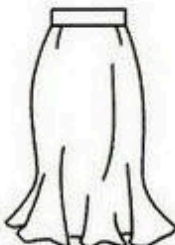
8-Panel Gore



Godet



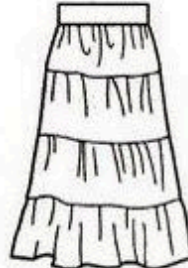
Flounce



Trumpet



Pleat



Prairie



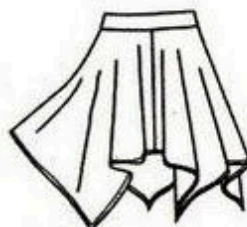
Layered



Tulle



Round



Handkerchief



Wrap



Pareo



Sarong

**Bottom
measurements**

- waist
- hips
- waist to hips
- inseam
- waist to floor



Straight



Skinny



Boot-Cut



Flare / Bell Bottoms



Wide Leg



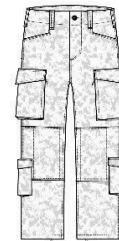
Leggings



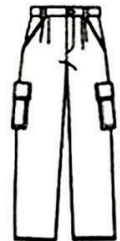
Stirrup



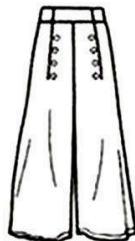
Jeans



Fatigues



Cargo Pants



Sailor Pants



Jodhpurs



Hot Pants



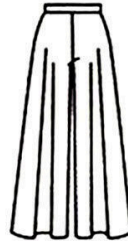
Skort



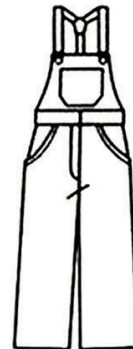
Sweat Pants



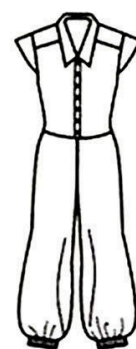
Harem



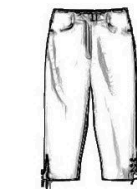
Palazzo



Carpenter / Overall



Jumpsuit



Capris



Knickers /
Breeches



Bermuda shorts



Shorts



Pumpkin
Pants

Outerwear

measurements:

- bust
- nape to waist
- waist to hips
- armscye depth
- neck size
- shoulder
- back width
- across chest
- front shoulder to waist



Peacoat



Blazer



Biker



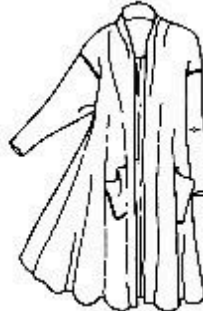
Bolero



Trench Coat



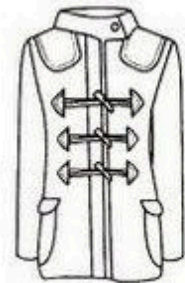
Wrap Coat



Swing Coat



Babydoll



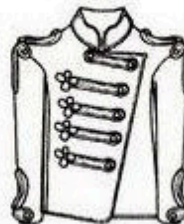
Duffle



Military



Eisenhower



Band Jacket



Hoodie / Fleece Jacket



Denim Jacket



Parka



Down Coat



Cardigan



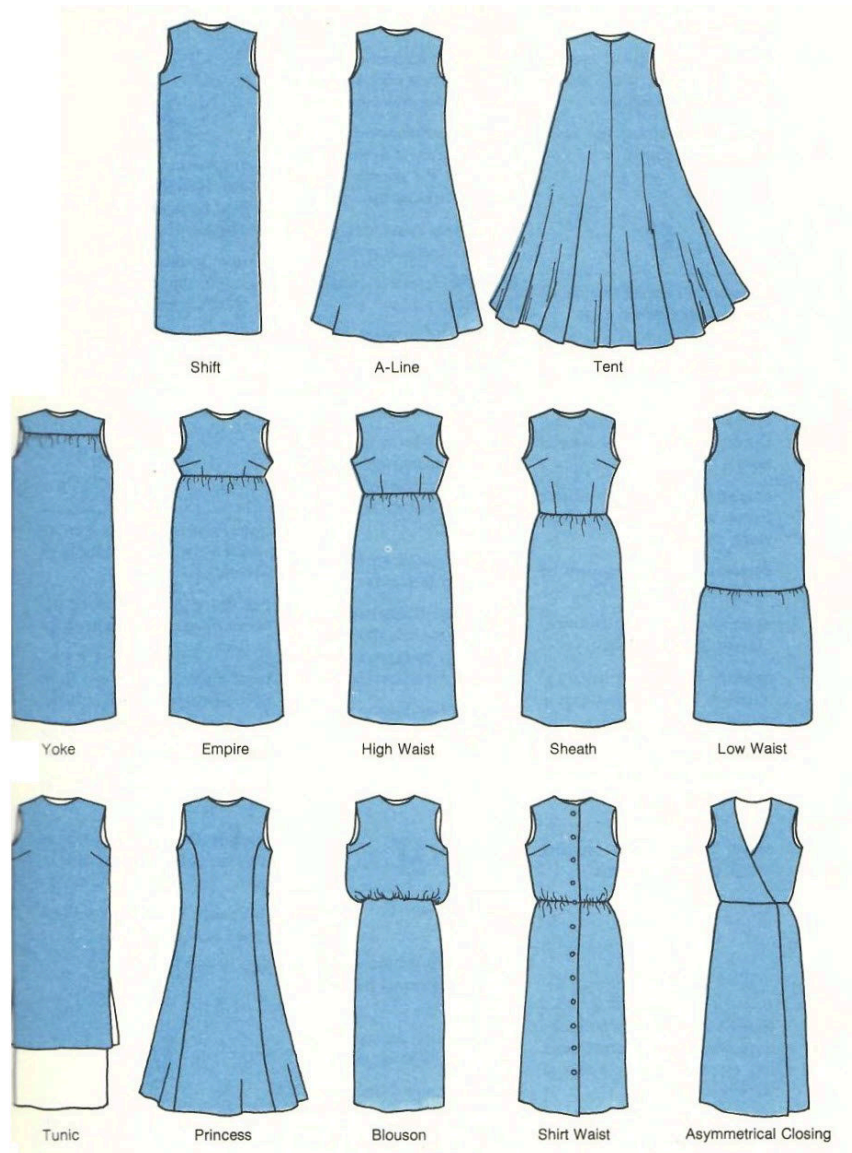
Cape



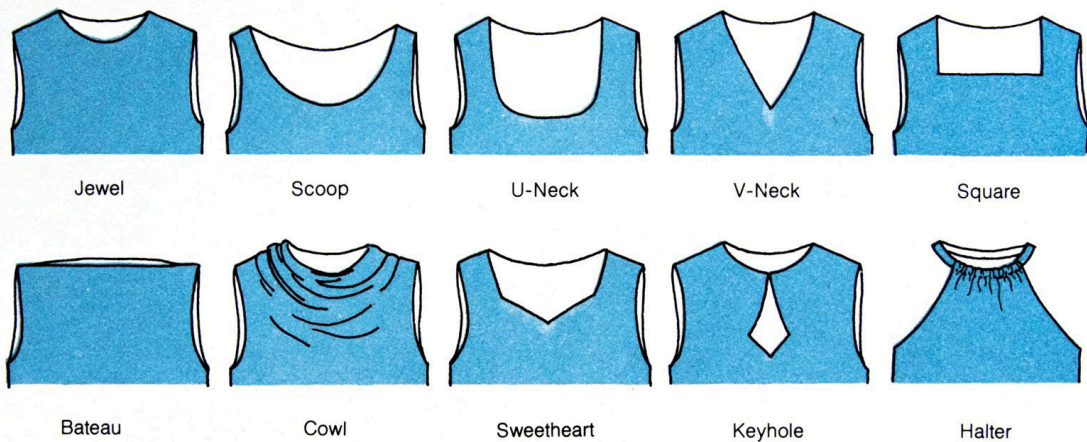
Poncho

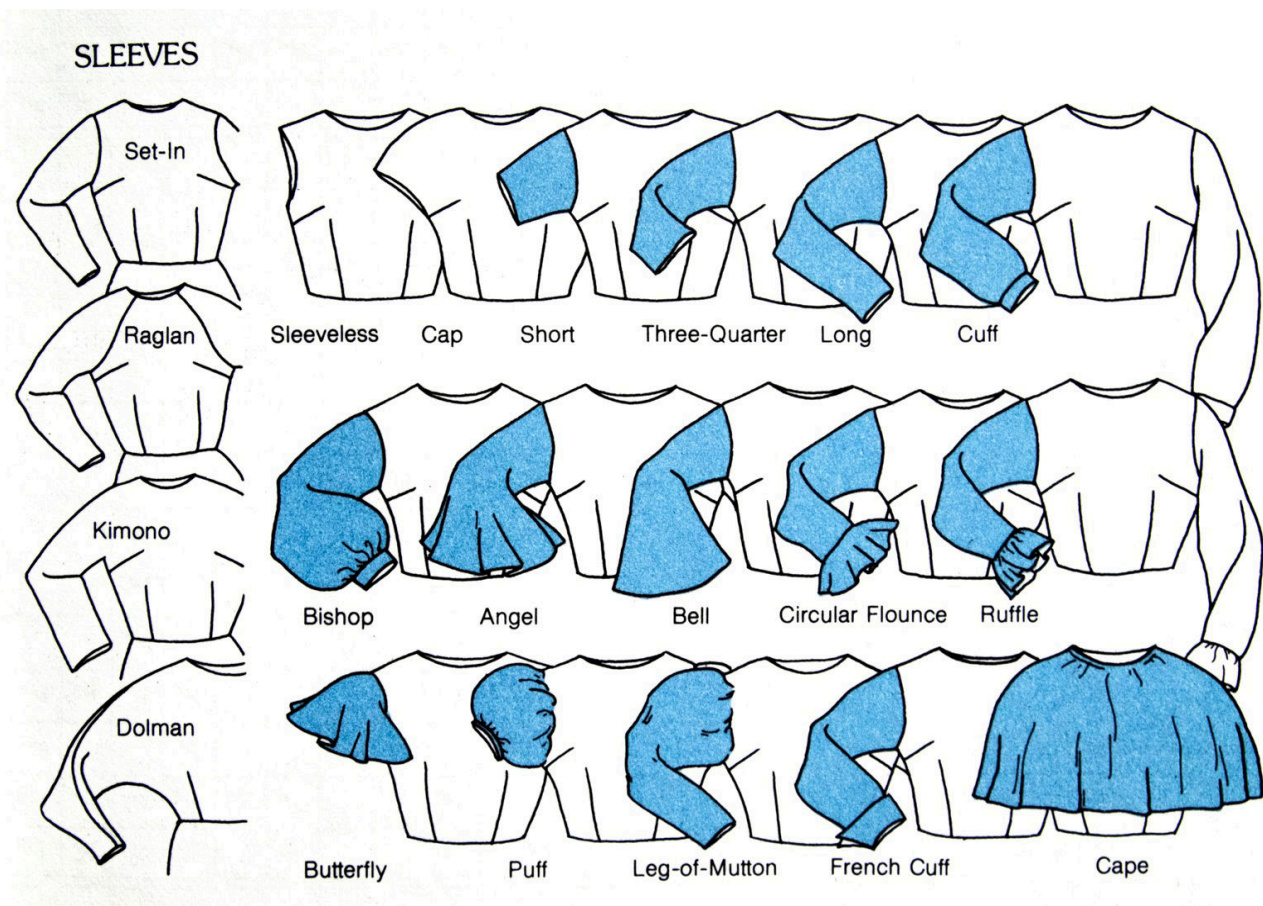
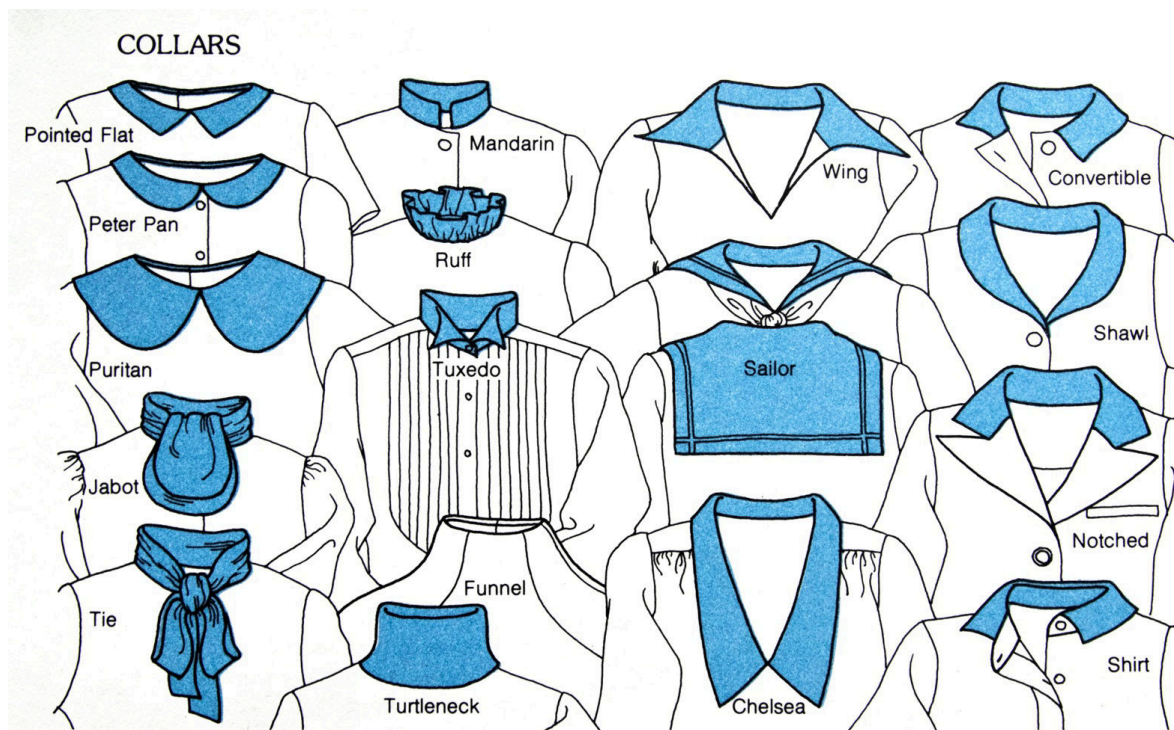
2) Garment Details Descriptions

DRESS SILHOUETTES

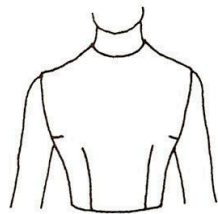


NECKLINES

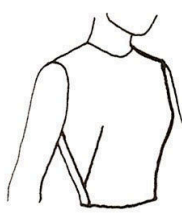




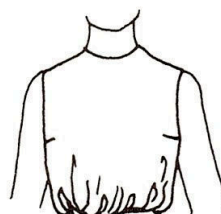
Bodice Styles



(a) Normal fitted



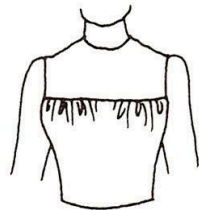
(b) French dart



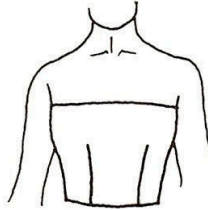
(c) Bloused



(d) Camisole



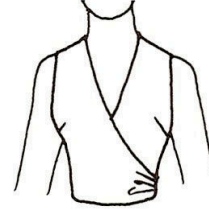
(e) Shoulder yoke



(f) Strapless



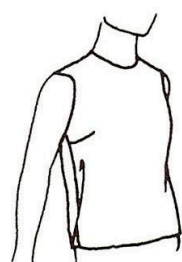
(g) Princess



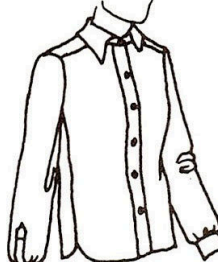
(h) Surplice



(a) Smock



(b) Overblouse



(c) Shirt



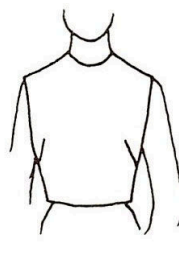
(d) Peasant



Middy/Sailor



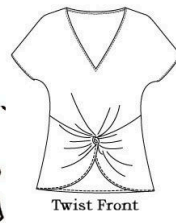
(f) Cossack



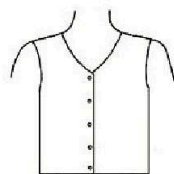
(g) Shell



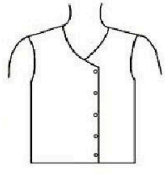
(h) Western



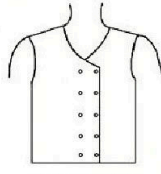
Twist Front



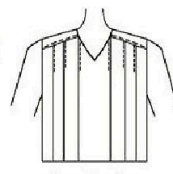
straight buttoned bodice



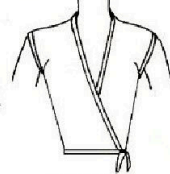
asymmetrical adjusted bodice



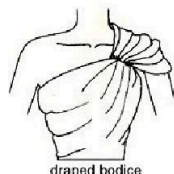
double breasted buttoning bodice



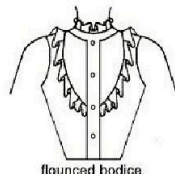
pleated bodice



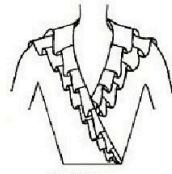
wrap-over top



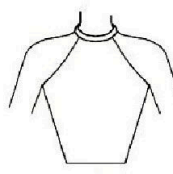
draped bodice



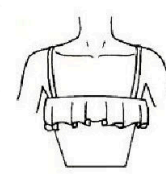
flounced bodice



flounced wrap-over top



halter



Spagetti Strap

Men's Collars



Classic

The most common shirt collar. It has a clean look suitable for both formal and casual shirts.



Button Down

A collar with buttonholes on the points to fasten them to the body of the shirt.



Spread

A shirt collar with a wide spread between the points, which can accommodate a bulky necktie knot.



Club

A shirt collar with rounded points.



Mandarin

A short unfolded stand-up collar. It starts at the neckline and typically rises vertically 2-5 centimeters. It's the Western interpretation of dresses worn by Mandarins in Imperial China.



Wing Tip

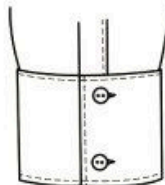
A formal collar style, designed to be worn under a tuxedo for white or black tie events. Normally it is worn with the bow-tie.

Men's Cuffs



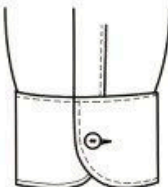
one button

The most common type of cuffs with a fitted button: the button is stitched on one side of the divide and buttonhole on the other.



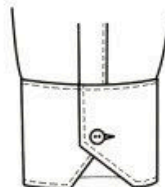
two buttons

It closes with two buttons, one on top of the other. Some cuffs have the option of cutting off the buttons when necessary to convert the shirt to a single-cuff worn with cufflinks.



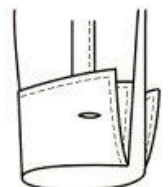
rounded

It's simply a barrel cuff with round corners. Rounded cuffs give off a slightly more casual and relaxed.



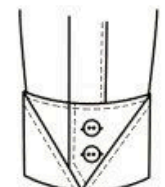
angle cut

A slight variation of the rounded cuff, the only difference being the angled cut at the base of the cuff.



french

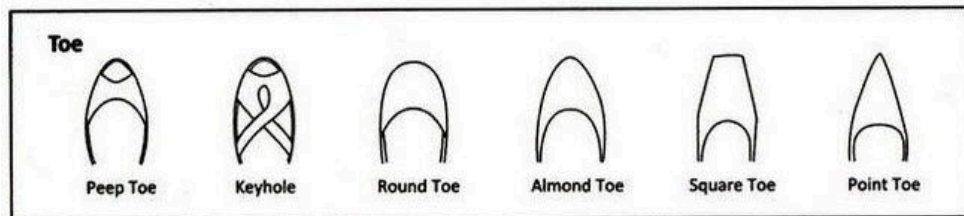
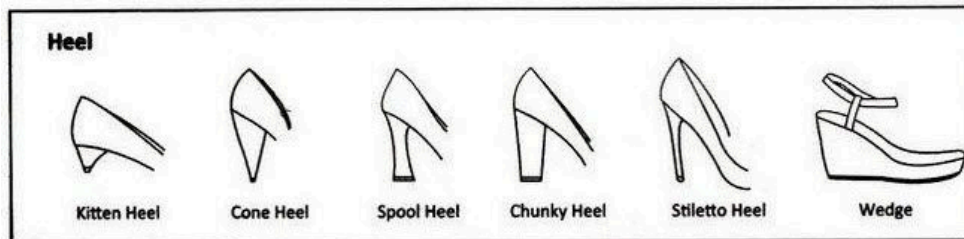
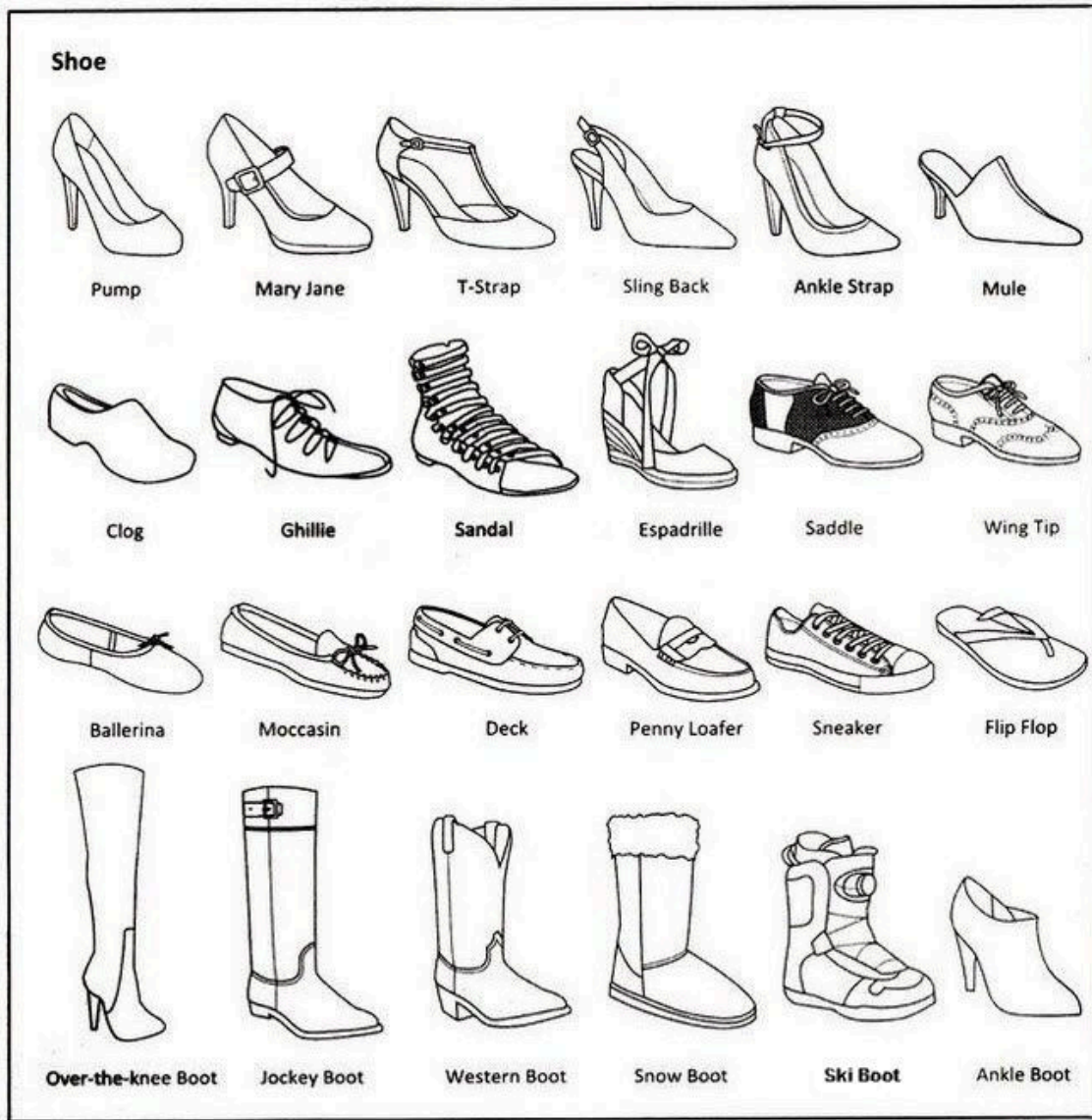
The most formal cuff. It is twice as long as regular cuffs and then folded back on themselves and closed with cuff links.



neapolitan

A two-button turnback cuff with an extra piece of fabric folded back to imitate a French cuff, but is held together by two buttons. Also known as cocktail, capril, or bond cuff.

3) Shoes



Additional diagrams can be found at : <http://visual.merriam-webster.com/clothing-articles/clothing.php>

Men's Shoes



CAP TOE OXFORD



WING TIP



MONK STRAP



PENNY LOAFER



CHELSEA



MOCCASIN



BOAT



ESPADRILLES



CHUKKA



HIKING BOOT



**COMBAT /
MILITARY BOOT**



COWBOY BOOT



**CONVERSE
SNEAKER**



SADDLEBACK



**BALLROOM
DANCE**



TAP SHOE

RoyalFashionist.com

4) Hats

Basic Hats
As with gloves, sleeves, etc – notice how the hat "surrounds" the head.



Men's Hats



TOP HAT



STOVEPIPE



BOWLER



HOMBURG



FEDORA



PANAMA



TRILBY



COWBOY



BUSH



PORK PIE



BUCKET



TRAPPER



WATCH CAP



STORMY KRONER



BOATER



FLAT



8-PIECE



5 PANEL



BASEBALL



FISHERMAN



TAM
O'SHANTER



YARMULKE



BUCKET HAT



BERET



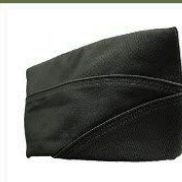
SAILOR CAP



PITH
HELMET



TYROLEAN



GARRISON CAP

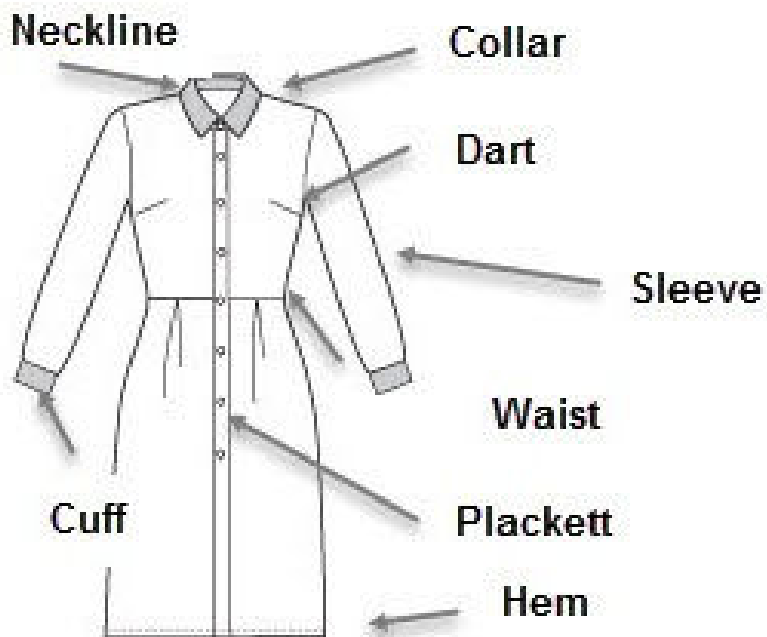
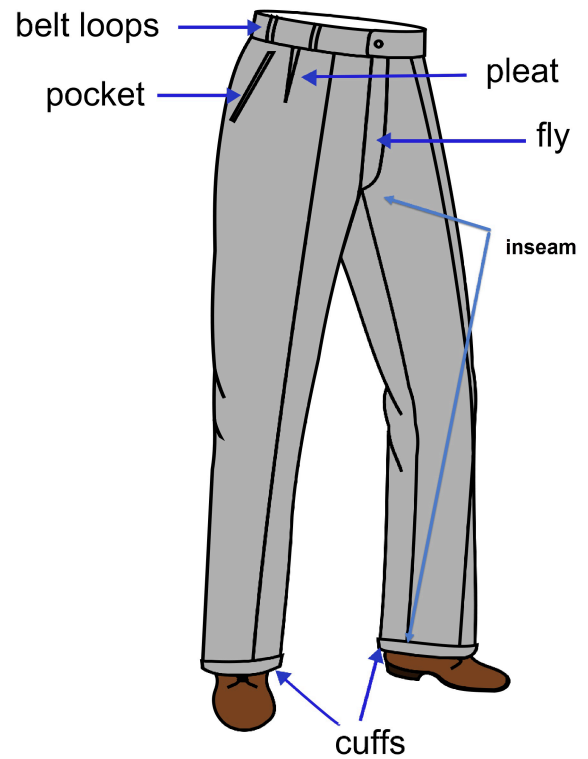
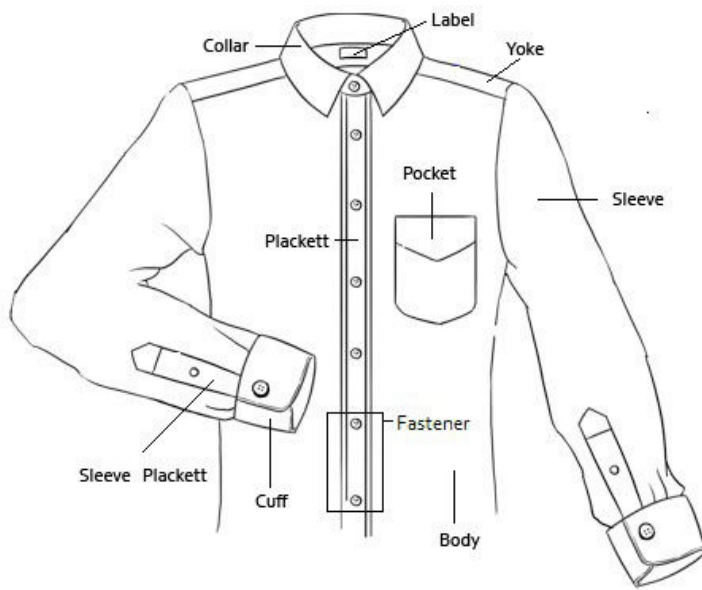


DEER
STALKER



BALACLAVA

5) Parts of a garment



Differences between Men's and women's garments:

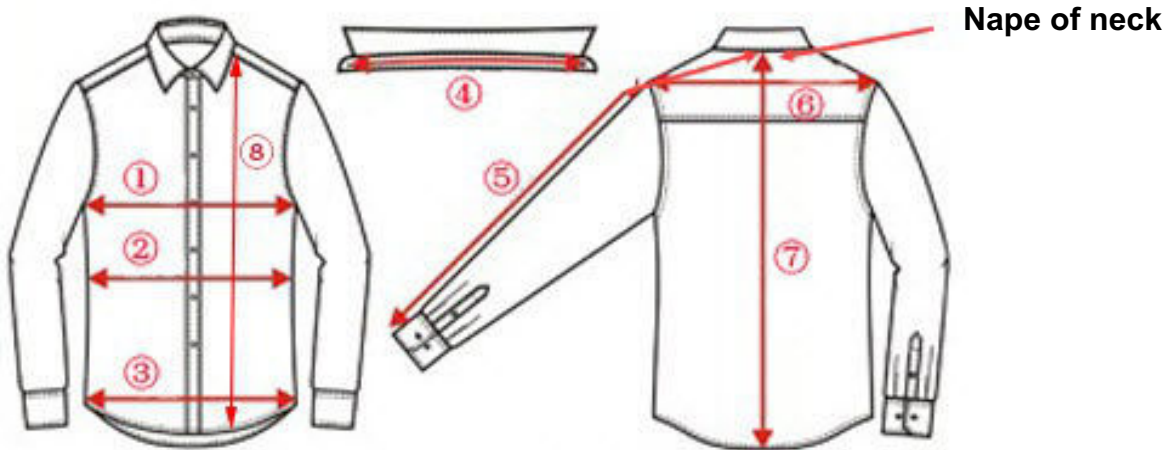
Men: In the USA, a man's shirt always buttons left over right (as you are wearing it). The sleeves and body of a man's shirt will be longer and the shoulders broader than a women's shirt.

Women: A woman's shirt usually, but not always, buttons right over left. Some designers, Ralph Lauren in particular, have their women's shirts button like the man's. Sweaters can button on either side for women.

Women's shirts and jackets are designed to fit a woman's shape. They're fuller in the bust area and usually have darts placed along the sides of the bust area to fit and they're narrower toward the waist. Jackets have shorter sleeves and the jacket part is shorter too because women have shorter arms and shorter torso's than men.

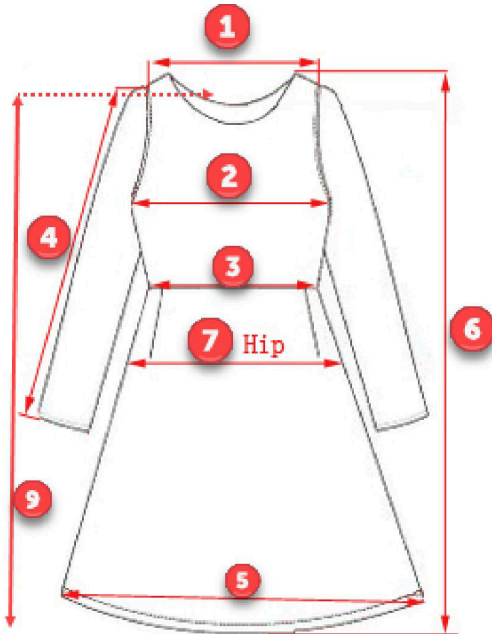
Bustline darts are only on women's shirts. Waistline darts in front almost always on women's only. Waistline darts on the back can be on both men's (slim styles) and women's shirts.

6) How to measure a garment for size



Shirt Measurements (Male and Female)

- | | |
|-----------------|---------------------------------------|
| 1) Bust / Chest | 5) Men's Sleeve Length (Nape to cuff) |
| 2) Waist | 6) Shoulder |
| 3) Bottom Hem | 7) Back Length (Nape to hem) |
| 4) Collar band | 8) Front Length |



Dress Measurements

- 1) Shoulder
- 2) Bust
- 3) Waist
- 4) Women's Sleeve Length (Seam to cuff)
- 5) Hem
- 6) Total Length
- 7) Hip (7-9" below the waist)
- 8) Nape to Waist

Excellent information on measuring a shirt:

<https://www.ratioclothing.com/help/measure-a-shirt>

Info on measuring a Jacket:

<http://www.askandyaboutclothes.com/clothing/style-tips/how-to-measure-a-jacket/>

Size Charts - To figure the size of a garment based on the measurements:

Misses Sizes

size chart for misses
5'4"-5'8"

alpha size	numeric size	bust	waist	hip
XS	0	32½"	25½"	35½"
XS	2	33½"	26½"	36½"
S	4	34½"	27½"	37½"
S	6	35½"	28½"	38½"
M	8	36½"	29½"	39½"
M	10	37½"	30½"	40½"
L	12	39"	32"	42"
L	14	40½"	33½"	43½"
XL	16	42"	35"	45"
XL	18	44"	37"	47"
XXL	20	46"	39"	49"

Juniors

size chart for regular juniors

alpha size	numeric size	bust	waist	hip
XS	0	30½"	22½"	33½"
XS	1	31½"	23½"	34½"
S	3	32½"	24½"	35½"
S	5	33½"	25½"	36½"
M	7	34½"	26½"	37½"
M	9	35½"	27½"	38½"
L	11	37"	29"	40"
L	13	38½"	30½"	41½"
XL	15	40"	32"	43"
XL	17	42"	34"	45"

Women

5'4"-5'8"

alpha size	numeric size	bust	waist	hip
0X	14W	42"	36"	45"
1X	16W	44"	38"	47"
1X	18W	46"	40"	49"
2X	20W	48"	42"	51"
2X	22W	50"	44"	53"
3X	24W	52"	46"	55"
3X	26W	54"	48"	57"
4X	28W	56"	50"	59"
4X	30W	58"	52"	61"
5X	32W	60"	54"	63"
5X	34W	62"	56"	65"

Men

TOPS - REGULAR 5'9"- 6'

size	neck	chest	waist	arm length
S	14-14½"	34-36"	28-30"	32½-33"
M	15-15½"	38-40"	32-34"	33½-34"
L	16-16½"	42-44"	36-38"	34½-35"
XL	17-17½"	46-48"	40-42"	35½-36"
XXL	18-18½"	50-52"	44-46"	36½-37"

BOTTOMS - REGULAR 5'9"- 6'

size	waist	seat	size	waist	seat
28	28-29"	34-35"	S	28-31"	35-38"
29	29-30"	35½-36"	M	32-35"	38½-41"
30	30-31"	36½-37"	L	36-39"	41½-44½"
31	31-32"	37½-38"	XL	40-43"	45-47½"
32	32-33"	38½-39"	XXL	44-47"	47-51"
33	33-34"	39½-40"			
34	34-35"	40½-41"			
36	36-37"	41½-43"			
38	38-39"	43½-45"			
40	40-41"	45½-46½"			
42	42-43"	47-48"			
44	44-45"	48½-49½"			
46	46-47"	50-51"			

Men's Suits Jacket Size Chart (Inch,Lbs)S=Short;R=Regular;L=Long;XL=Extra Long

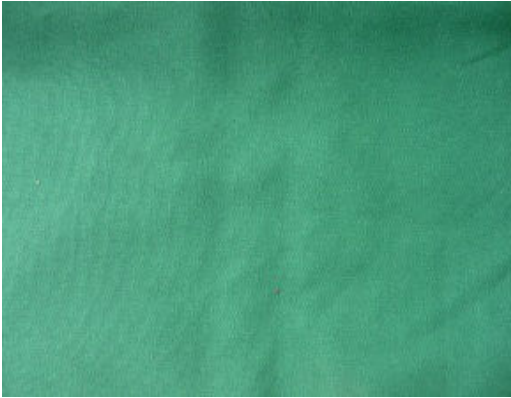
	Jacket	Chest	Overarm	Shoulder	Waist	Hip	Neck	Sleeve	Length	Height	Weight
S	34R	32-34	40-42	17.75	26-28	32-34	14-15.5	32	30	5'6"-5'9"	110-120
	35R	33-35	41-43	18.00	27-29	33-35	14-15.5	32	30	5'6"-5'9"	120-130
	36R	34-36	42-44	18.25	27-30	33-36	14-15.5	32	30.5	5'6"-5'9"	130-140
M	37R	35-37	43-45	18.50	28-31	34-37	14.5-15.5	33	30.5	5'8"-5'11"	135-145
	38R	36-38	44-46	18.75	29-32	35-38	14.5-15.5	33	30.5	5'8"-5'11"	145-155
	39R	37-39	45-47	19.00	30-33	36-39	15-16.5	33	30.5	5'8"-5'11"	155-165
L	40R	38-40	46-48	19.25	30-34	36-40	15-16.5	33	31	5'8"-5'11"	160-170
	41R	39-41	47-49	19.50	31-35	37-41	15.5-16.5	34	31	5'10"-6'1"	170-180
	42R	40-42	48-50	19.75	32-36	38-42	15.5-16.5	34	31	5'10"-6'1"	180-190
XL	43R	41-43	49-51	20.00	33-37	39-43	16-17.5	34	31	5'10"-6'1"	190-200
	44R	42-44	50-52	20.25	34-40	40-45	16-17.5	34	31	5'10"-6'1"	200-210
	46R	44-46	52-54	20.75	36-42	42-47	16.5-17.5	35	31.5	6'-6'3"	210-220
XXL	48R	46-48	54-56	21.25	38-44	44-50	17-18.5	35	31.5	6'-6'3"	220-240
	50R	48-50	56-58	21.75	40-47	46-53	17-18.5	36	31.75	6'1"-6'5"	240-260
	52R	50-52	58-60	22.25	42-49	48-54	17-18.5	36	31.75	6'1"-6'5"	260-275
3XL	54R	52-54	60-62	22.75	44-51	50-56	18-19.5	37	32	6'2"-6'7"	275-290
	56R	54-56	62-64	23.25	46-53	52-58	18-19.5	37.5	32	6'2"-6'7"	290-300
	58R	56-58	64-66	24.75	48-55	54-60	18-19.5	38	32.5	6'3"-6'9"	300-310
4XL	60R	58-60	66-68	25.00	50-57	56-62	18-19.5	38.5	32.5	6'3"-6'9"	310-330
	62R	60-62	68-70	25.25	52-59	58-64	20-21.5	39	33	6'4"-6'10"	320-340
	64R	62-64	70-72	26.75	54-61	60-66	20-22	39.5	33	6'4"-6'10"	340-350
6XL	66R	64-66	72-74	27.25	56-63	62-68	21-23	40	34	6'5"-7'	350-370

HAT SIZING CHART			
SIZE	HEAD CIRCUMFERENCE	U.S. HAT SIZE	U.K. HAT SIZE
SMALL	21 1/8 - 21 1/2	6 3/4" - 6 7/8"	6 5/8" - 6 3/4"
	54 cm - 55 cm	17.1 cm - 17.5 cm	16.8 cm - 17.1 cm
MEDIUM	21 7/8 - 22 1/4	7" - 7 1/8"	6 7/8" - 7"
	56 cm - 57 cm	17.8 cm - 18.1 cm	17.5 - 17.8 cm
LARGE	22 5/8" - 23	7 1/4" - 7 3/8"	7 1/8" - 7 1/4"
	58 cm - 59 cm	18.4 cm x 18.7 cm	18.1 cm - 18.4 cm
X-LARGE	23 1/2 - 23 7/8	7 1/2" - 7 5/8"	7 3/8" - 7 1/2"
	60 cm - 61 cm	19 cm x 19.4 cm	18.7 cm x 19 cm
XX-LARGE	24 1/4" - 24 5/8"	7 3/4" - 7 7/8"	7 5/8" - 7 3/4"
	62 cm - 63 cm	19.7 cm x 20 cm	19.4 cm x 19.7 cm
XXX-LARGE	25" - 25 1/2"	8" - 8 1/8"	7 7/8" - 8"
	64 cm - 65 cm	20.3 cm - 20.6 cm	20 cm x 20.3 cm

Threadcurve.com

7) Fabric/color patterns

Solid



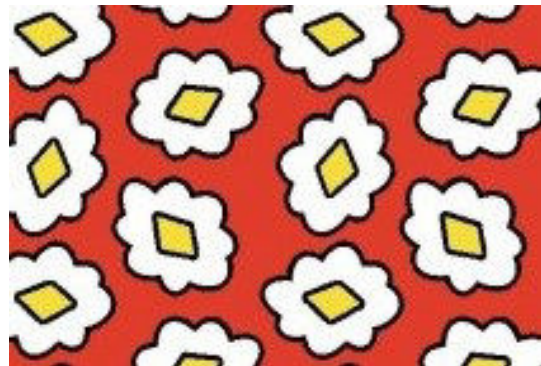
Floral



Polka dot



Small Pattern



Plaid



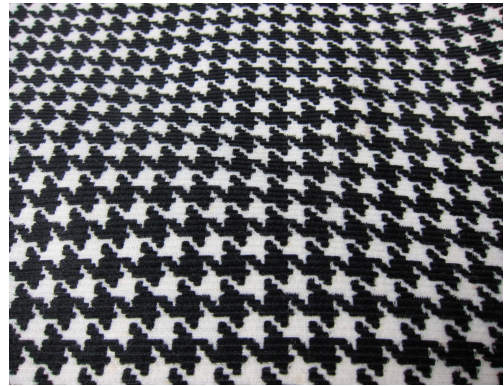
Argyle



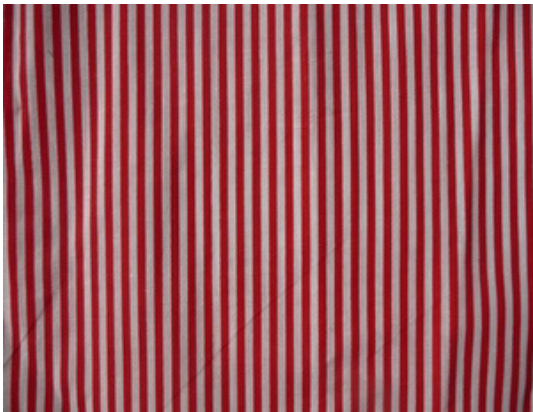
Herringbone



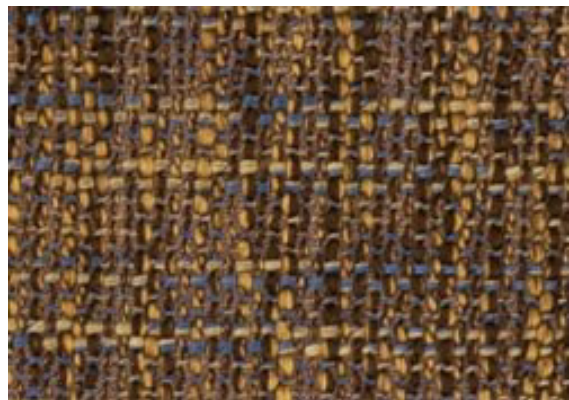
Houndstooth



Stripes



Tweed



Gingham



Blocks



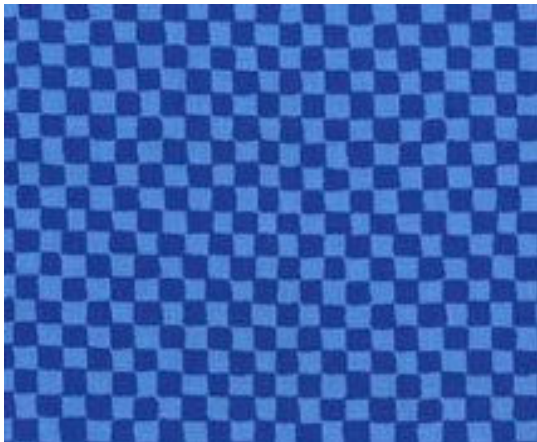
Geometric



Scroll

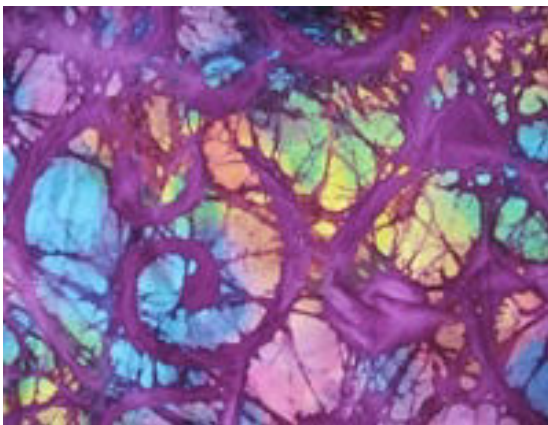


Checks

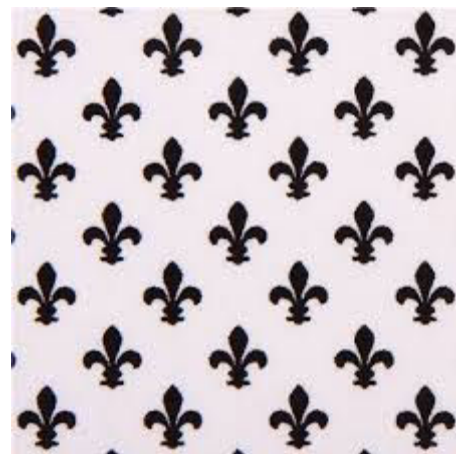


Paisley

Batik



Fleur de lis



Animal Print



Abstract



African



Asian



Indian



Camouflage

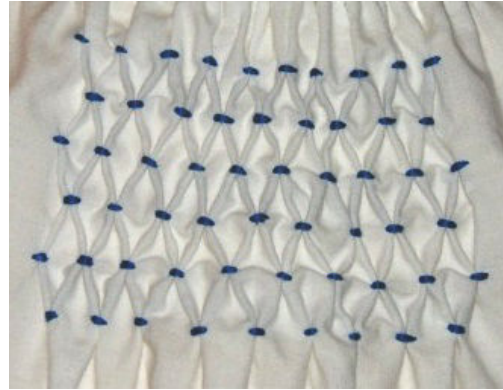


Embellishments

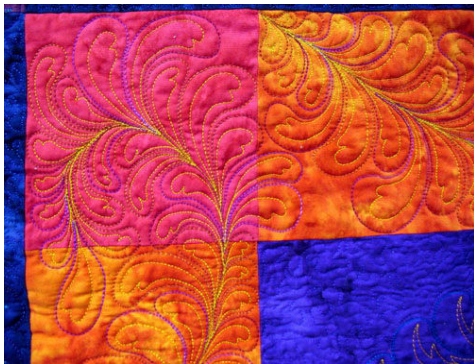
Beading



Smocking



Quilting



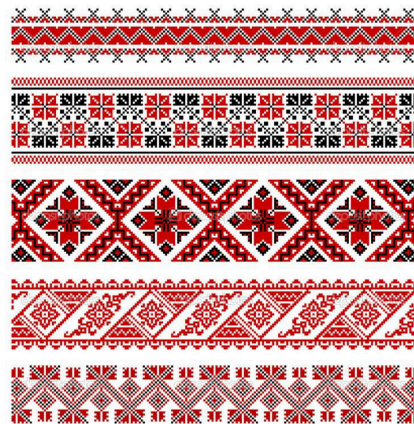
Feathers



Embroidery - Mexican



Embroidery - Ukranian/Russian



8) Fabric Samples

(Cut your own fabric swatches or purchase a set of Fabric Swatches from Costume Inventory Resources - www.costumeinventorystore.com)

Cotton	Muslin	Loose weave cotton/Homespun
Denim	Twill	Cotton/Polyester
Polyester	Acetate	Satin

Lamé	Organza	Lace
Knit	Lycra/Spandex	Sequin Dot
Wool	Flannel	Linen

Tulle	Netting	Mesh / Athletic mesh
Voile	Velour/Velveteen	Panne Velvet
Brocade	Silk	Rayon

Leather	Suede	Vinyl / Fake Leather
Fake Fur	Fleece	Seersucker
Corduroy	Terry Cloth	Felt

Tapestry	Upholstery	Burlap
Nylon	Add your own fabric here	Add your own fabric here
Add your own fabric here	Add your own fabric here	Add your own fabric here

9) Eras / Time Periods

Page 9-1

Determining the Era or Time Period is extremely difficult. These are suggestions on what to look for and examples in Movies/TV programs that have particularly good costumes.

Here are several reference books to look for:

“What People Wore: A Visual History of Dress from Ancient Times to 20th Century America” by Douglas W. Gorsline (many editions - look at used book sellers)

“What People Wore When: A Complete Illustrated History of Costume from Ancient Times to the Nineteenth Century for Every Level of Society” by Melissa Leventon

Illustrations on the following pages are from VK.com/blosh and Behance.net/gallery and others. There are more images of hats, undergarments, swimsuits and wedding dresses on the VK.com/blosh site.

Description	Time Span	Costuming Notes	Movie & TV Reference
Roman /Greek		Basic garments of tunics & togas, basic draped pieces. Upper class were more embellished and colorful. Men: Togas Women: Draped dresses	Spartacus (1960), Gladiator (2000), Troy (2004), A Funny Thing Happened on the Way to the Forum
Medieval	pre 1603	Men: Tunics - long and with belt, breeches Women: Higher neckline, fitted dresses	A Knight's Tale (2001), Excalibur (1981), Braveheart (1995), Camelot

Description	Time Span	Costuming Notes	Movie & TV Reference
Italian Renaissance	1490-1527	<p>Emphasis on garish and elaborate decoration of a basic Medieval silhouette for nobility and upper class. Upper class garments included silk, cotton and furs. Middle class or lower class had simple garments made of wool.</p> <p>Men: Doublets, hose, codpieces, camicia, soft caps, lots of visible lacings. Sometimes a cape or tabard was added.</p> <p>Women: Full skirt sometimes with under skirt and over skirt, square necklines, full sleeves or full at top of sleeve and fitted below elbow.</p>	Romeo and Juliet, The Merchant of Venice,, Borgias (2014), Ever After
Tudor	1485-1603	<p>During Tudor times, the wealthy and elite would wear elaborate clothing that would represent their status. The poor wore simple, practical clothing during Tudor times that were made from woollen cloth. Men and women would wear long tunics, aprons and cover their heads with cloth.</p> <p>Men: Tight fitted jacket or long tunic, Russ, Stockings or tight fitted trousers</p> <p>Women: Fitted bodice with full skirt</p>	Elizabeth R (1971), Elizabeth 1 (2005), Wolf Hall (2015)
Restoration /Cavalier	1660 - 1700	<p>Men: Justaucorps (a long, knee-length coat), Waistcoat, Shirt, Cravat, Breeches, stockings and heeled shoes</p> <p>Women: Manteau gown with skirts pulled to back, Low neckline, chemise, stockings and heeled shoes.</p>	Gentleman Jack, 12th Night at the Globe (2012), 3 Musketeers

Description	Time Span	Costuming Notes	Movie & TV Reference
Georgian	1714-1830	<p>Men: Waistcoat (vest), jacket, and breeches (pants) often in bold colors with embroidery on cuffs, lapels. Wrapped Neckcloths instead of ties</p> <p>Women: Dresses made of muslin, silk with an empire waist, low bodice, draped silhouette and embroidery. Often short sleeved.</p>	Amadeus (1984), Dangerous Liaisons (1988), David Copperfield (1999). Les Misérables, Outlander (2014)
Colonial	1600-1800	<p>Men: Breeches, a shirt, a waistcoat and coat. Men would wear a knee-length coat with fitted shoulders and narrow wrists over a high-collared shirt.</p> <p>Women: Bodice with corset, petticoat and full skirt - often with an apron on top.</p> <p>Puritans wore very plain clothing with wide white collars.</p>	John Adams (2008), The Patriot (2000)

Description	Time Span	Costuming Notes	Movie & TV Reference
Regency	1795-1825	<p>Empire silhouette was the key style in women's clothing during the Regency era. The dresses were usually light, long, and fit loosely</p> <p>Men: Tailcoat was high in the back of the neck, fitted in the back, chest and abdomen, had long tails and the wide "M notch" lapels. It could be either single or double breasted and could be worn open or closed. It was cut high in front so that even when closed a strip of the waistcoat could be seen beneath. Waistcoat, Breeches, neckcloth - sometimes with lace.</p> <p>Women: Empire waist dress, short (or long) sleeves. Sometimes with a jacket or bonnet.</p>	Charming Man (2006), Bright Star (2009), Pride and Prejudice (2005), Bridgerton, Emma (2009), Scarlet Pimpernel (1999)
Romantic /Victorian	1820-1880	<p>Men: Long pants, longer coat (not cut away), vest/waistcoat, cravat or tie (not neck cloth)</p> <p>Women: Fitted bodice, skirt either full or pulled back with bustle, sleeves fitted, modest necklines</p>	Copying Beethoven (2006), Great Expectations (2012), A Christmas Carol , Jekyll & Hyde, Age of Innocence (1993), Little Women, Carousel
Civil War	1860-1865	<p>Men: Long jacket, long pants, vest, tie or cravat, usually dark colors, stove top hat</p> <p>Women: Long skirts - full and sometimes very full, long sleeves and modest necklines</p>	Courage to Love (2000), Gone With the Wind (1939), Cold Mountain (2003), Glory (1989)

Description	Time Span	Costuming Notes	Movie & TV Reference
Edwardian	1901 - 1910	<p>Men: Three-piece suits (jacket, trousers, and waistcoat, or vest) with high, round-collared white shirts, neckties, and derby or bowler hats</p> <p>Women: Long dresses or blouses and skirts. Natural waistline. Large, decorated hats became popular.</p>	My Fair Lady, Music Man, Pollyana, Unsinkable Molly Brown, Titanic, Out of Africa, Finding Neverland, Oklahoma
1910's	1910 - 1919	<p>Men: More practical, modest versions of Edwardian clothes.</p> <p>Women: More practical versions of clothing - still with large hats, natural waistlines.</p>	Funny Girl, The Unsinkable Molly Brown , Reds
1920's	1920 - 1929	<p>The straight skirt was the dominant shape of the 1920s, but flaring skirts (from the knee down) were also in fashion. ... In addition to bathing suits, tennis uniforms, and golfing outfits, simple, comfortable skirts, sailor blouses, and large-brim hats were worn by women. Men, look for bow ties, suspenders, fedoras, white t-shirts and wear it with a fitted vest</p> <p>Men: Suits somewhat fitted, vests common, fedora hat. Ties can be regular or bow tie.</p> <p>Women: Straight dress with drop waist. Hem just at or below knee.</p> <p>Iconic: Straight flapper dress - sometimes made of fringe.</p>	Chicago (2002), The Great Gatsby, Singing in the Rain, Downton Abbey, Thoroughly Modern Millie

Description	Time Span	Costuming Notes	Movie & TV Reference
1930's	1930 - 1939	Men: Men's jackets with wide lapels, medium width ties Women: Dresses mostly straight skirt - well below knee, high neckline Iconic:	Annie, Sound of Music, Bonnie & Clyde (1967)
1940's	1940 - 1949	Men: Single or double breasted suits Women: Fitted waist dresses Iconic: Trenchcoat	Casablanca, The Philadelphia Story
1950's	1950 - 1959	Men: Full suit coats, wide ties Women: Iconic: Men's Black leather jacket, Women- fitted / slim pants at capri length	Grease, Bye Bye Birdie, Guys & Dolls, Damn Yankees, West Side Story
1960's	1960 - 1969	Men: Simple suits, narrow/medium tie Women: Fitted dresses and pants Iconic: Mini skirt	Breakfast at Tiffany's (1961), Dick van Dyke TV Show
1970's	1970 - 1979	Iconic: Bell bottom trousers, Hippie / Flower child - Empire waist dress, long skirts, tie-dye	A Chorus Line, 9 to 5, Saturday Night Fever
1980's	1980 - 1989	Men: Leather/denim jackets Women: Fitted or pencil skirts with jackets for work, glamorous, fitted dresses for evening wear Iconic: Padded shoulders for both men and women	Ghostbusters, Dallas TV series, Miami Vice
1990's	1990 - 1999	Men: 'Business Casual' wear became the norm, very few 3 piece suits, more sport jackets and pants. Jeans were worn everywhere. Grunge appeared. Women: Bright colors, jeans, baggy jackets, leggings, grunge, torn jeans	Seinfeld - TV
Contemporary	2000 +		In the Heights, White Collar - TV



1670 - 1700 Clothes



Italian Renaissance







1900's Casual wear



1910's Women's fashion

vk.com/blosh bloshka.info
facebook.com/bloshka

BLOSHKA



1910's Casual wear



1915



1915 - 1917



1915



1912



1914



1918



1916



vk.com/blosh facebook.com/bloshka bloshka.info

1910's Men's fashion

vk.com/blosh bloshka.info
facebook.com/bloshka

BLOSHKA





1920's Casual wear

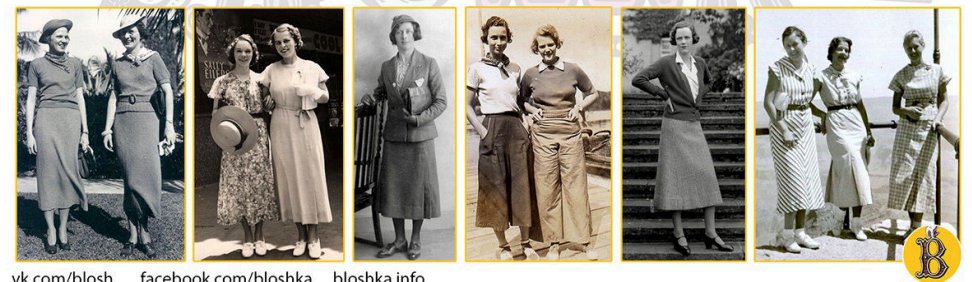


vk.com/blosh facebook.com/bloshka bloshka.info





1930's Casual wear



vk.com/blosh facebook.com/bloshka bloshka.info







Jewelry Type	Details
Barrett / Hair Acc	Bobbie Pin
	Claw
	Hinged
	Knitting needle
	Snap
Bracelet	Band
(See more types in photos	Bangle
following this chart)	Beaded
	Chain
	Charm
	Cuff
	Designer
	Friendship
	Tennis
Chains	Bead
	Box
	Curb
	Herringbone
	Knotted
	Mesh
	Popcorn
	Rope
	Simple
	Wheat
Cufflinks	Bullet Back
	Chain link
	Fixed Back
	Knotted
	Stud / Button
	Whale Back

Jewelry Type	Category	Details
Earrings	Dangle	Clip
	Dangle	Fish hook
	Dangle	Pierced
	Hoop	Clip
	Hoop	Pierced
	Post	
Medals/Ribbons	Pendent	Academic Award
	Pendent	Military Medal
	Pendent	Military Ribbon
	Pendent	Service Award
	Pin	Athletic Medal
	Pin	Military Medal
	Pin	Military Ribbon
	Pin	Service Award

Jewelry Type	Details
Necklace	Bead
	Choker
	Opera
	Pendent
	Solitaire
	String
	Twisted
Pin	Brooch (Antique)
	Decorative
	Hair
	Hat
	Lapel
Ring	Cocktail / Fashion
	Multi-Stone
	Signet / Class
	Simple Band
	Solitaire
	Wedding

Tiara / Crowns	Bandeaux
	Circlet
	Diadem
Tie Pin / Clip / Ties	Bolo Tie
	Tie Chain
	Tie Clip
	Tie Chain
	Tie Tack
	Tuxedo Button Covers

Jewelry Type	Categories	Details
Watches	Athletic	Wrist
	Casual	Pendent
		Pocket
		Watch Pin
		Wrist
	Digital / Smart	Wrist
	Dress	Bracelet
		Pendent
		Pocket
		Watch Pin
		Wrist
	Military / Dive	Wrist

ACCESSORIES GUIDE

TYPES OF BRACELETS



chain



cuff



wristwatch



gemstone



cage cuff



leather



cable



hinged



cross over



stretchy



open bangle



statement



bangle



friendship



tipped



toggle clasp



link



identification



wrap



affirmation



slider



medical/magnetic



beaded



strands



tennis



charm

TOP JEWELLERY *chains*



TRACE



BELCHER



HAYSEED



CURB



SNAKE



ROPE



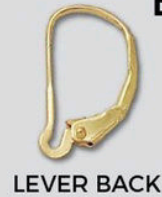
BEAD



FIGARO

KERNOWCRAFT®
EST 1967

DIFFERENT TYPES OF EARRING FINDINGS



LEVER BACK



FANCY EARWIRE



BALL EARRINGS



NON-PIERCE



HOOPS



EARWIRE



BEADING HOOPS



SCREW BACK



EARNUTS/PUSHBACK



dress watch

usually with a leather strap, a dress watch is the only choice to wear with a suit. The most elegant have a gold casing, a white dial and roman numerals.



casual watch

with straps from different fabrics like nylon or canvas, to wear with casual clothing.



chronograph watch

a functional watch that combines the functions of a stopwatch and a display watch, and it has many complex features. Widely used in car racing.



dive watch

chunky and bold functional watch to resist the water pressure, with a moveable external 60 minutes ring that can be used to time how long you're underwater.



digital watch

it shows the time as a number instead of hands pointing at numbers. The digits are usually shown as a seven-segment display.



smart watch

it is a computerized wristwatch with functionality that goes beyond timekeeping. Many run mobile apps, using a mobile operating system. Some models, also called 'watch phones', feature full mobile phone capability.



bracelet watch

jewel that combines a clock and a bracelet, where the latter assumes the role of a strap.



pocket watch

made to be carried in a pocket, as opposed to a wristwatch, which is strapped to the wrist. It was the most common type of watch in the 16th century.

Know your RINGS

16 types of rings you never knew had names.

by StylishCircle.com



Engagement ring



Armour ring



Eternity ring



Purity ring



Cocktail ring



Wedding ring



Puzzle ring



Rosary ring



Claddagh ring



Mother's ring



Mourning ring



Class ring



Cameo ring



Birthstone ring



Championship ring



Thumb ring



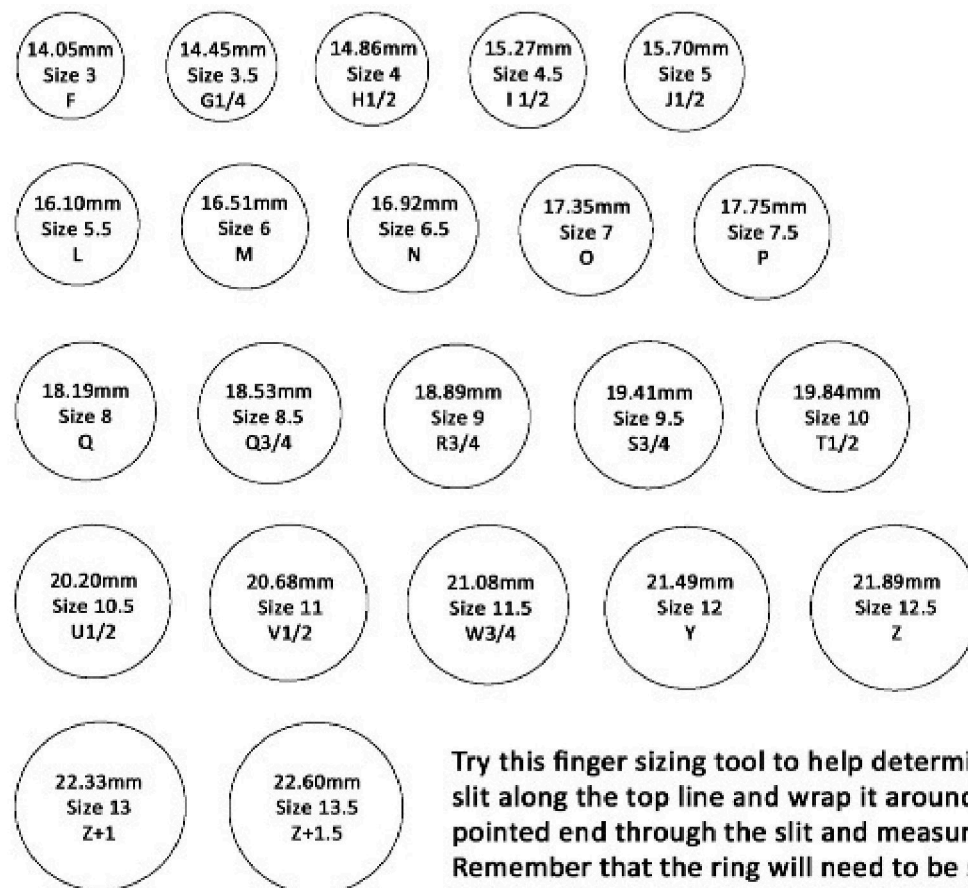
Signet ring



SIZE CONVERSION CHART

Use the circles below to judge sizes against your existing rings. Make sure you line the circles up below with the inside of your band to get an idea of size.


Cut Out



Try this finger sizing tool to help determine your ring size. Cut a slit along the top line and wrap it around your finger pushing the pointed end through the slit and measuring the size there. Remember that the ring will need to be snug but will still need to fit over the largest part of your finger.

Please ensure that you are printing at 100% when printing this page and that it is not being shrunk to fit on the page. Compare the scale bars below with a ruler to be sure the ring sizes are accurate.




Appendix:

Notes on Printing
and setting up a
binder.

This Guidebook is
designed to go in 1"
Binder with 8 Dividers.

Print out the Title
Page (pg 1) 2 times -
once for the cover
and once for a title
page.

This page contains the
binder spine 
that you can print out,
trim, and place in the
spine pocket.

The last column
contains divider tab
information. You can
print it out and cut
each topic to put in
the divider tab.

Costume
Data Entry

GUIDEBOOK

Garment Types	Details	Shoes	Hats	Parts of Garment
Measurements	Fabric Patterns	Fabric Samples	Era/Time Periods	Jewelry

Credits:

Many of the images have the website included in the picture.

Garment Types - <https://www.pinterest.com/> - various sources

Garment details from *Vogue Sewing*. New York: Harper & Row, 1982.

Additional garment details:

<https://ir.library.oregonstate.edu/xmlui/bitstream/handle/1957/24654/ECNO1382.pdf?sequence=1>

Size charts from www.JCPenny.com

Time Period / Era images from www.behance.net/gallery
Look for BLOSHKA