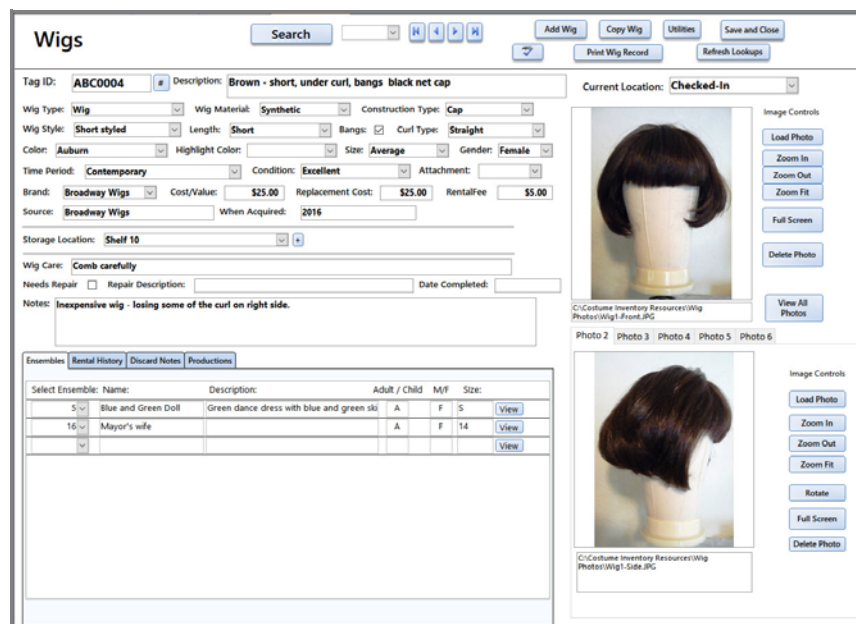


Introducing the Wig Inventory Database

The Wigs Inventory Database is available as a stand-alone product or as a module for the Theatre Inventory Database. It is a great way to keep track of your wigs, hair pieces, extensions, and facial hair.

Each wig record has many fields to describe the item, assign it to a Production, keep track of the Ensemble it is assigned to and store up to 6 photos.



Wigs

Tag ID: ABC0004 Description: Brown - short, under curl, bangs black net cap Current Location: Checked-In

Wig Type: Wig Wig Material: Synthetic Construction Type: Cap

Wig Style: Short styled Length: Short Bangs: Curl Type: Straight

Color: Auburn Highlight Color: Size: Average Gender: Female

Time Period: Contemporary Condition: Excellent Attachment:

Brand: Broadway Wigs Cost/Value: \$25.00 Replacement Cost: \$25.00 Rental Fee: \$5.00

Source: Broadway Wigs When Acquired: 2016

Storage Location: Shelf 10

Wig Care: Comb carefully

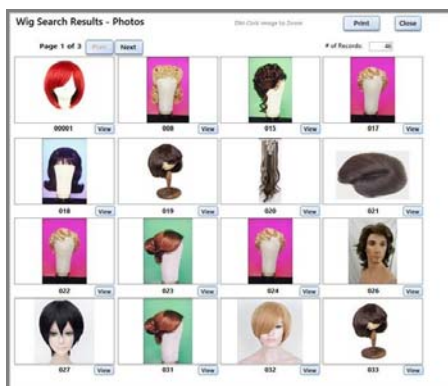
Needs Repair: Repair Description: Date Completed:

Note: Inexpensive wig - losing some of the curl on right side.

Select Ensemble:	Name:	Description:	Adult / Child	M/F	Size:
5	Blue and Green Doll	Green dance dress with blue and green ski	A	F	S
16	Mayor's wife		A	F	14

Photo 2 Photo 3 Photo 4 Photo 5 Photo 6

The **Search** module allows you to search for wigs by many different criteria and print out lists and reports with photos.




Search For Wigs

Clear All View Search Results

Description:

Wig Type:

Wig Material:

Construction Type:

Wig Style:

Length:

Bangs:

Curl Type:

Color:

Highlight Color:

Size:

Gender:

Time Period:

Condition:

Brand:

Source:

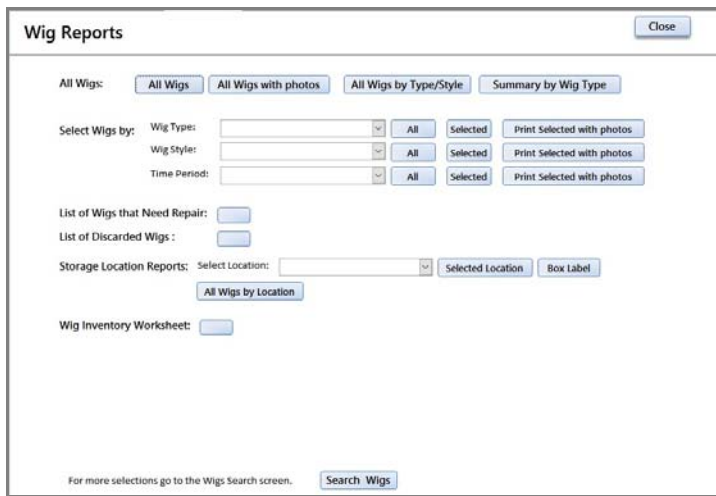
Date Acquired:

Storage Location:

Current Location:

Date Updated: and

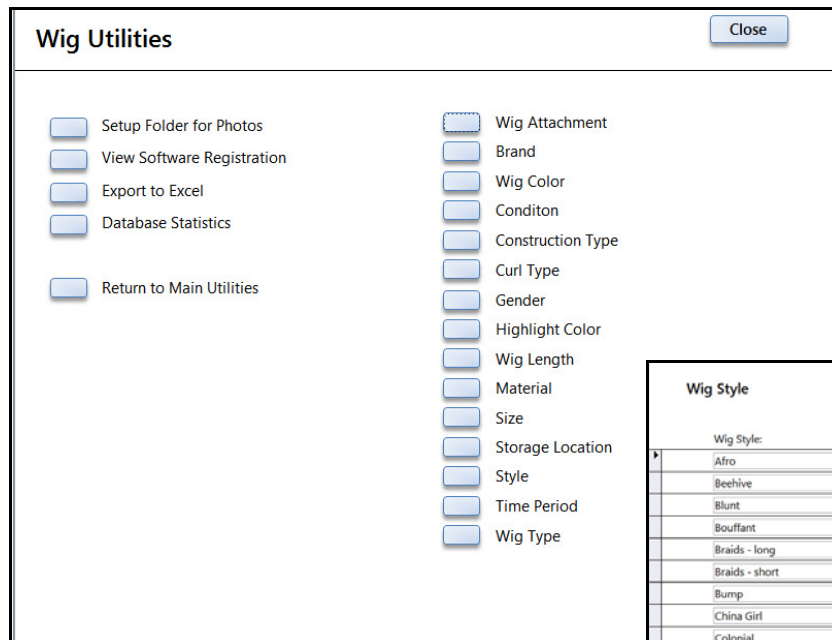
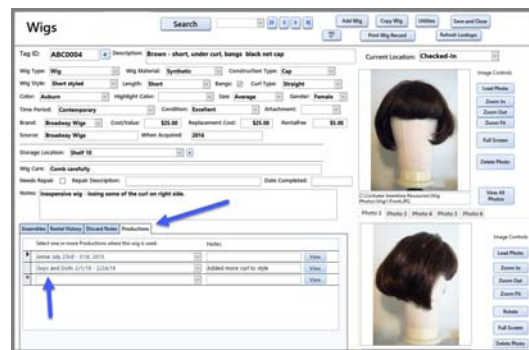
Do you want to include Discarded Wigs?



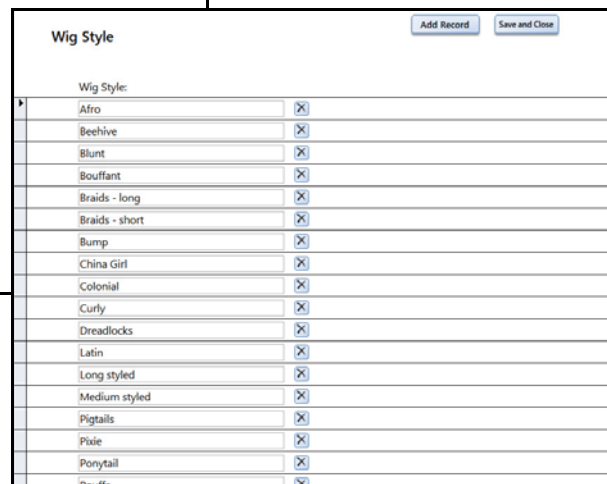
The **Reports** menu allows you to print a variety of reports about your collection.

Wigs can be assigned to one or more **Productions**.

On the Productions screen you can print lists of wigs that have been used in that production.



All the data in the drop-down boxes in the Wig screen can be updated through the **Utilities Menu**.



The *User Guide* is available as part of the Theatre Inventory Database user guide at www.theatreinventory.info.